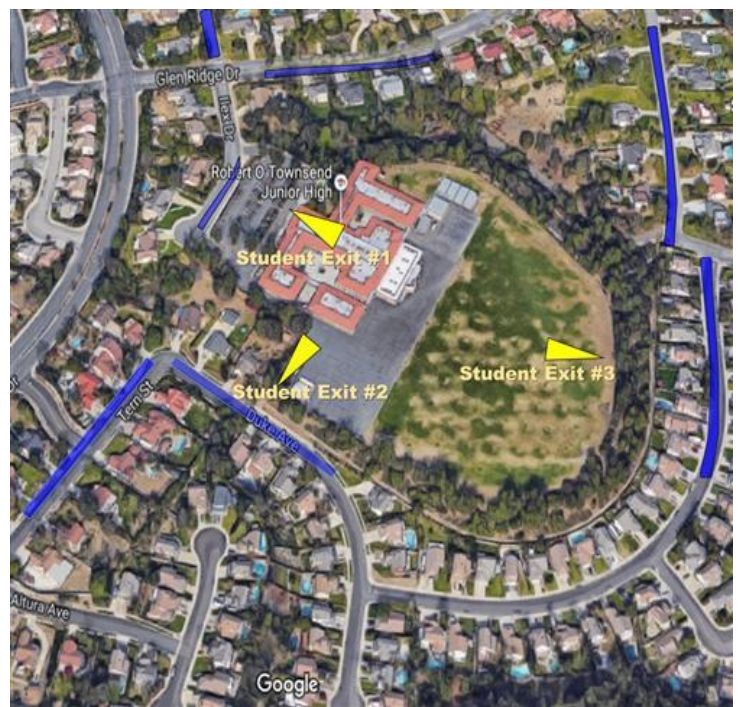
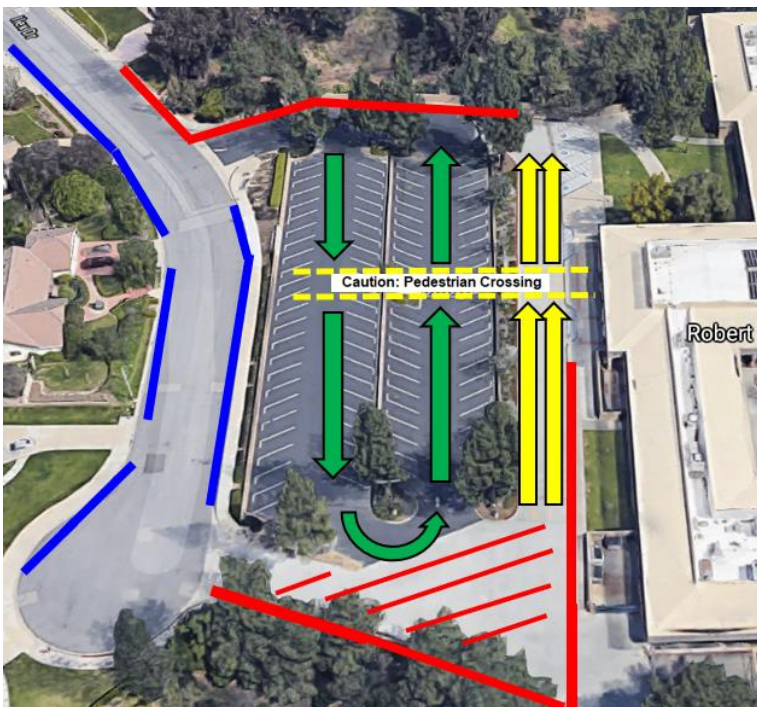


Townsend Traffic Maps for Pick Up & Drop Off

When dropping off students in the morning, we encourage all drivers to arrive before 7:15 to avoid the traffic congestion. Since there are 3 exits for students to leave campus, we encourage families to make arrangements to use Exit 2 and Exit 3 to reduce the traffic congestion in the parking lot.

- All drivers who plan on waiting in the parking lot must be parked in a parking space. Waiting in the driving aisles is not permitted.
- The **green** arrows below indicate the flow of traffic for vehicles passing through the driving aisles or looking for a parking space. Stopping and waiting is not permitted in these areas. All vehicles arriving prior to dismissal must be in a parking space. Drivers may continue circling the parking lot aisles if there are no available parking spaces.
- The **yellow** arrow represents the Bus Loading Zone. Drop off is permitted before school. Both lanes are not open for student pick up until all busses have left the parking lot. Waiting behind buses before & during dismissal is not permitted. Drop off and pick up are not permitted in front of curbs painted red.
- The **red** areas are No Parking Zones. Waiting is not permitted in these areas. Entering/exiting vehicles is not permitted in these areas.
- The **blue** areas are designated for parking and waiting. ****These are strategic areas where you can direct your student to meet you after school in order to reduce the time spent in traffic congestion and maximize social distancing.**



Crosswalk Safety

We are very fortunate to finally have a crossing guard at the intersection of Ilex Dr. and Glen Ridge Dr. before and after school. As we return to in-person instruction, our crossing guard will be establishing appropriate cycles to stop traffic to assist groups of students waiting to enter the crosswalk. As our students, parents, and resident drivers become accustomed to having vehicle & pedestrian traffic regulated at the intersection, we ask that our families & community members cooperate with our crossing guard to help keep our students safe.

- Allow additional time for drop off in the morning, arrive prior to 7:15 to avoid peak traffic congestion.
- Adhere to the No U-Turn signs posted on Glen Ridge & Ilex.
- Do not park, drop off, or pick up students along curbs painted red.
- Do not allow/encourage J-walking across Glen Ridge to avoid the crosswalk.
- Students must wait for crossing guard direction before entering the crosswalk.
- Vehicles need to remain behind yellow crosswalk lines when having to yield or stop at the intersection of Glen Ridge & Ilex. Do not enter/pass the crosswalk until all pedestrians have finished crossing and the crosswalk is empty.

