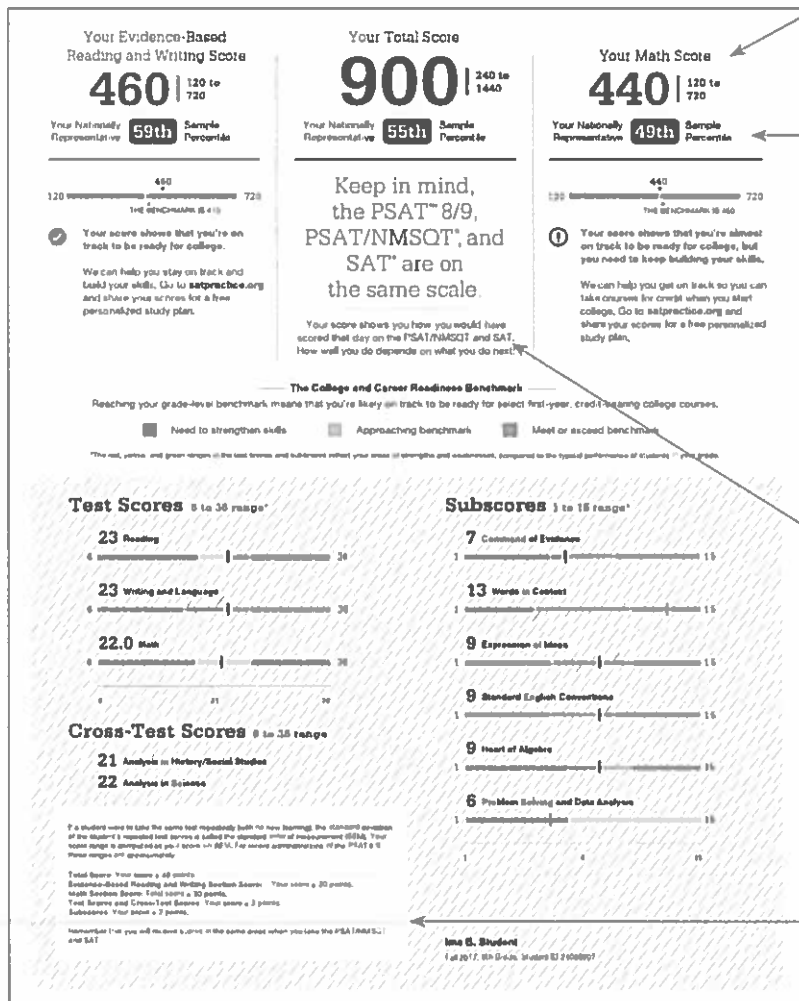


A PARENT TUTORIAL

Understanding 2017-18 PSAT 8/9 Results

A Case Study: Ima B. Student's PSAT 8/9 Score Report

Take a look at Ima B. Student's Sample Score Report below and on the back. Use the corresponding information to help you interpret your student's PSAT™ 8/9 Score Report.



What Are Ima's Scores?

Ima's Evidence-Based Reading and Writing score is 460, and her Math score is 440. In Evidence-Based Reading and Writing, Ima's score exceeds the benchmark, and she is on track for college readiness. In Math, Ima is close to meeting the benchmark. Test scores, cross-test scores, and subscores can give Ima a better understanding of areas to work on.

What Are Ima's Score Percentiles?

Because Ima is in the ninth grade, the percentiles compare her scores with those of all ninth graders in the nation. Ima scored as well or better than 59% of a nationally representative group of ninth-grade students in Evidence-Based Reading and Writing. In Math, she scored as well or better than 49% of a nationally representative group of freshmen. Additional percentiles are available in Ima's online score report.

How Will Ima Do on the SAT*?

The PSAT 8/9, PSAT/NMSQT®, and SAT® are scored on a common scale. Therefore, if Ima had taken the SAT instead of the PSAT 8/9 on the same test date, she would have received the same score. By the time Ima takes the SAT, she will likely have had additional learning from school and practice. Her PSAT 8/9 results can help Ima focus her efforts in high school to be better prepared for the SAT.

What Are Ima's Score Ranges?

Ima's score would likely vary if she took the test repeatedly under the same conditions, even if her skill level remained the same. Her score report indicates her estimated score ranges.

The PSAT 8/9 provides a clear, early picture of you and your readiness for college. Your scores help you and your teachers pinpoint areas for improvement. Learn about the tests' place in the vertical score scale that spans all tests in the SAT Suite of Assessments.

Sign in to get your scores.

PSAT 8/9 Score Ranges

PSAT 8/9 Score Reported	Details	Score Range
Total score	Sum of the two section scores.	240–1440
Section scores (2)	Evidence-Based Reading and Writing, and Math.	120–720
Test scores (3)	Reading, Writing and Language, and Math.	6–36
Cross-test scores (2)	Analysis in History/Social Studies and Analysis in Science. Based on selected questions in the Reading, Writing and Language, and Math Tests.	6–36
Subscores (6)	Reading and Writing and Language: Command of Evidence and Words in Context. Writing and Language: Expression of Ideas and Standard English Conventions. Math: 1–15 Heart of Algebra, and Problem Solving and Data Analysis.	