

### **Measure G Projects Completed**

Districtwide Safety & Security (cameras, electronic locks, gates, fencing)  
Ayala HS New Science Building  
Briggs K8 New Science Building  
Magnolia JHS Science Lab Renovations  
Ramona JHS Science Lab Renovations  
Allegiance Steam Academy Renovations (Formerly El Rancho ES)  
Chino HS Reconstruction (Phases 0, 0.5, 1, & 2, Phase 1 Offsite)  
Cattle ES Modernization  
Litel ES Modernization  
Oak Ridge ES Modernization  
Country Springs ES Modernization  
Rolling Ridge ES Modernization  
Canyon Hills JHS Modernization  
Townsend JHS Modernization  
Butterfield Ranch ES ES Modernization  
Hidden Trails ES ES Modernization  
Ayala HS Modernization (Phases 1, 2, & 3)  
Eagle Canyon ES Modernization (Phases 1 & 2)  
Don Lugo HS Library Renovation

### **Measure G Projects In Progress**

Chino HS Reconstruction (Phase 3 & Phase 2 Offsite)  
Legacy Academy Construction (Preserve School #2)  
Ayala HS Modernization (Phase 4)  
Eagle Canyon ES Modernization (Phase 3)  
Front Office Relocations Group A (Borba ES, Marshall ES & Walnut ES)  
Front Office Relocations Group B (Glenmeade ES, Litel ES, & Oak Ridge ES)

### **Measure G Projects In Planning/Design Phase**

Don Lugo HS Admin Building, Gymnasium & Pool Renovation



**Citizen's Oversight Committee Meeting**  
Construction Update Overview, May 3, 2022

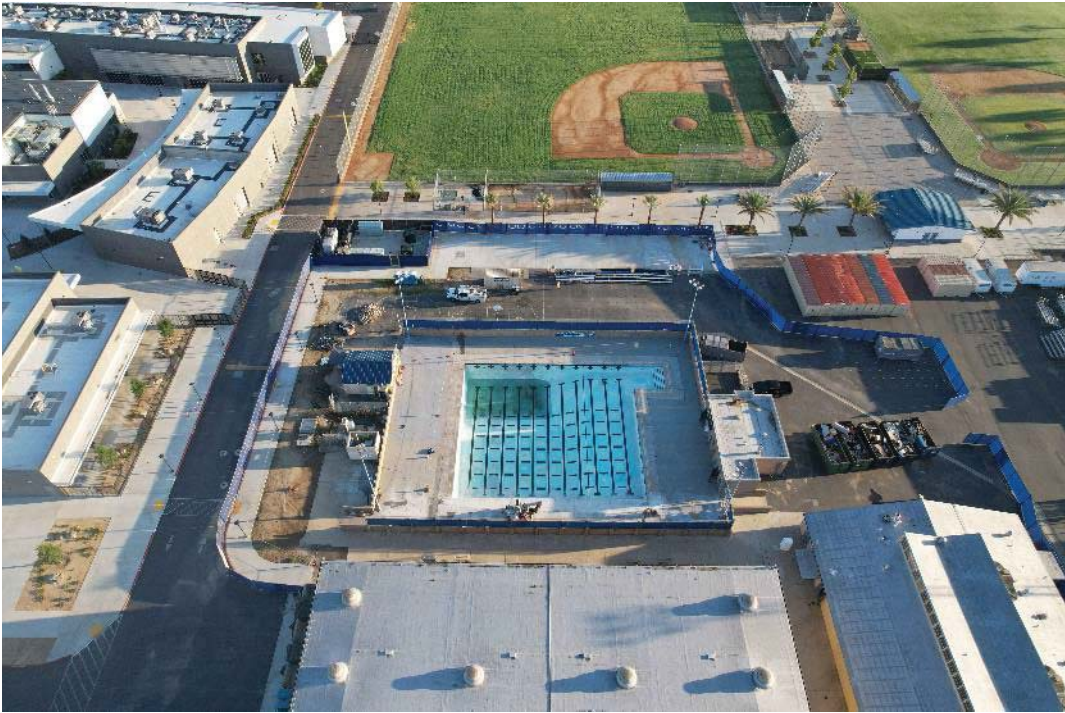
- ***Reconstruction of Chino HS***

Chino High School Phase 1 and Phase 2 continue to wrap up as final change orders and completion notices circulate for approval and signature. With the goal of project close out by the end of September 2023, Facilities has turned over the entirety of the site to Chino HS staff and students. In conjunction with the City of Chino, offsite improvements surrounding the school are winding down as punch list items and negotiations are addressed. Chino HS Phase 3 is now underway, addressing the renovation of the original gymnasium, the old boy's shower and locker room, and the aquatic center. Demolition and hazardous materials abatement has begun, and project completion is estimated for April of 2024.

Aerial View



Chino HS Phase 3



- ***Ayala HS Modernization***

Phase 4 of Modernization at Ayala HS, the site's final phase, is heading towards a mid-September finish. This phase saw construction in the admin building, and gymnasium, and ends with alterations and renovation of the aquatic center. As with every phase, Phase 4 includes upgraded utilities, workspaces, and furniture, and a fully renovated swimming pool, pool equipment such as lane lines, diving boards, racing platforms, etc., as well as new mechanical equipment, lockers, restrooms, and a new scoreboard yet to come. Though no work was scheduled for the main gymnasium, this summer saw the completion of the gymnasium sound system replacement, providing the site with its first functional overhead sound system in 20+ years.

Ayala HS Gymnasium Foyer

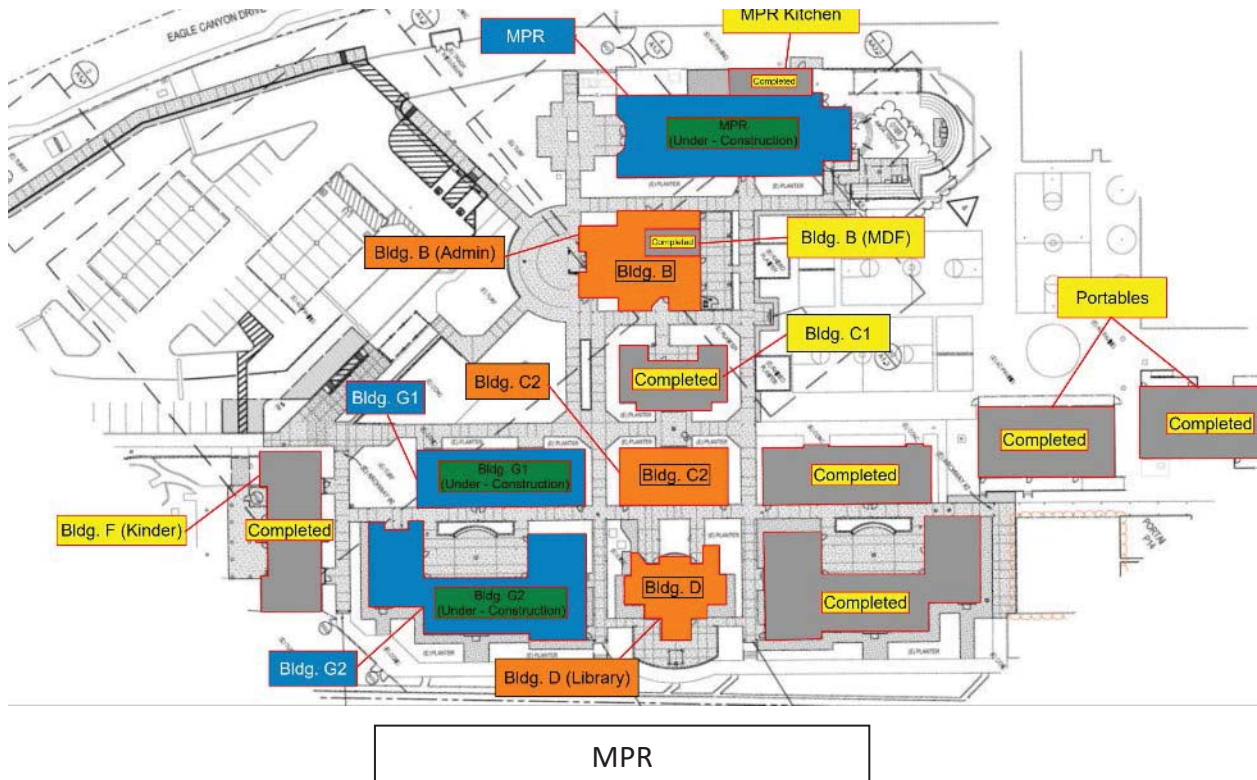


Ayala HS Pool Remodel



- **Eagle Canyon Elementary School**

Phase 2 is complete, which is comprised of two buildings, housing (8) classrooms. All spaces have been turned over to the site for full utilization. The kitchen, building C-1, which is comprised of (3) rooms, and (2) kindergarten rooms was completed over the summer. During the summer sprint, we also removed and replaced over 750 yards of concrete (site work) to bring the site up to ADA standards. Phase 3 commenced on May 28, and it included Buildings G-1, G-2, and the MPR. Mechanical, plumbing, and electrical systems (MPE) rough-in is complete and drywall has been installed. We anticipate turning over Phase 3 to the site in December of this year.



G1 Building

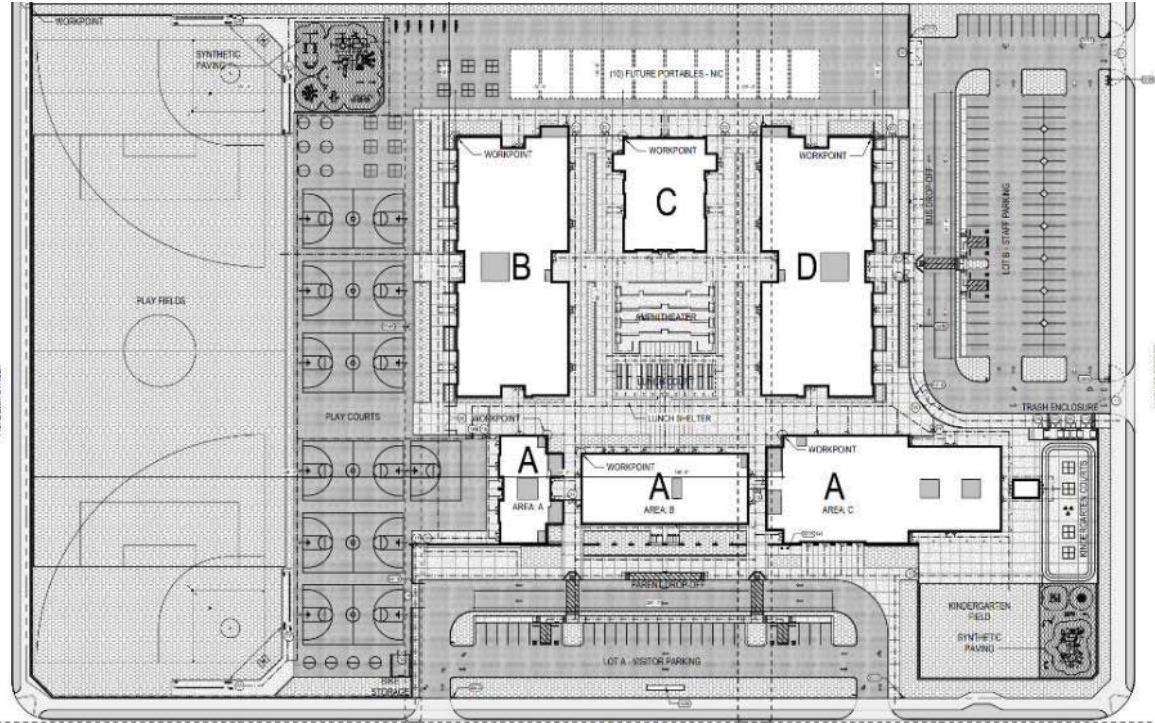


Kitchen

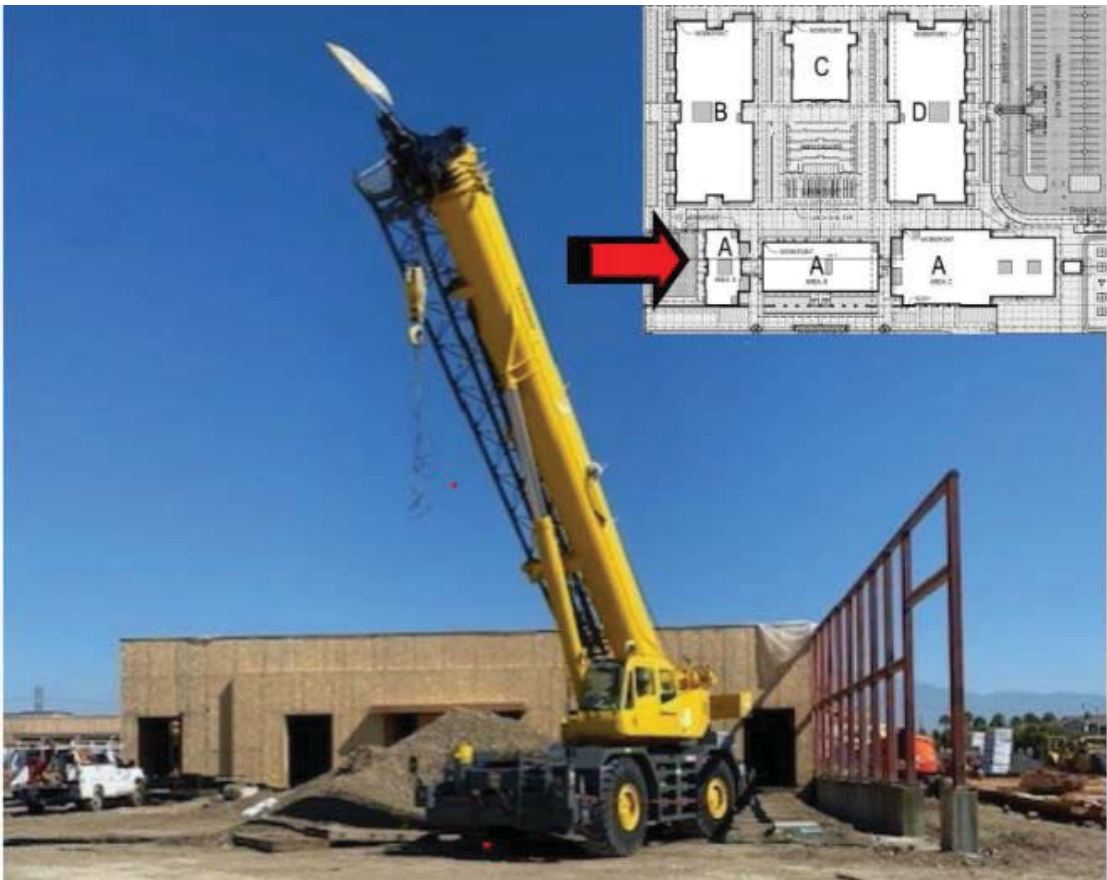


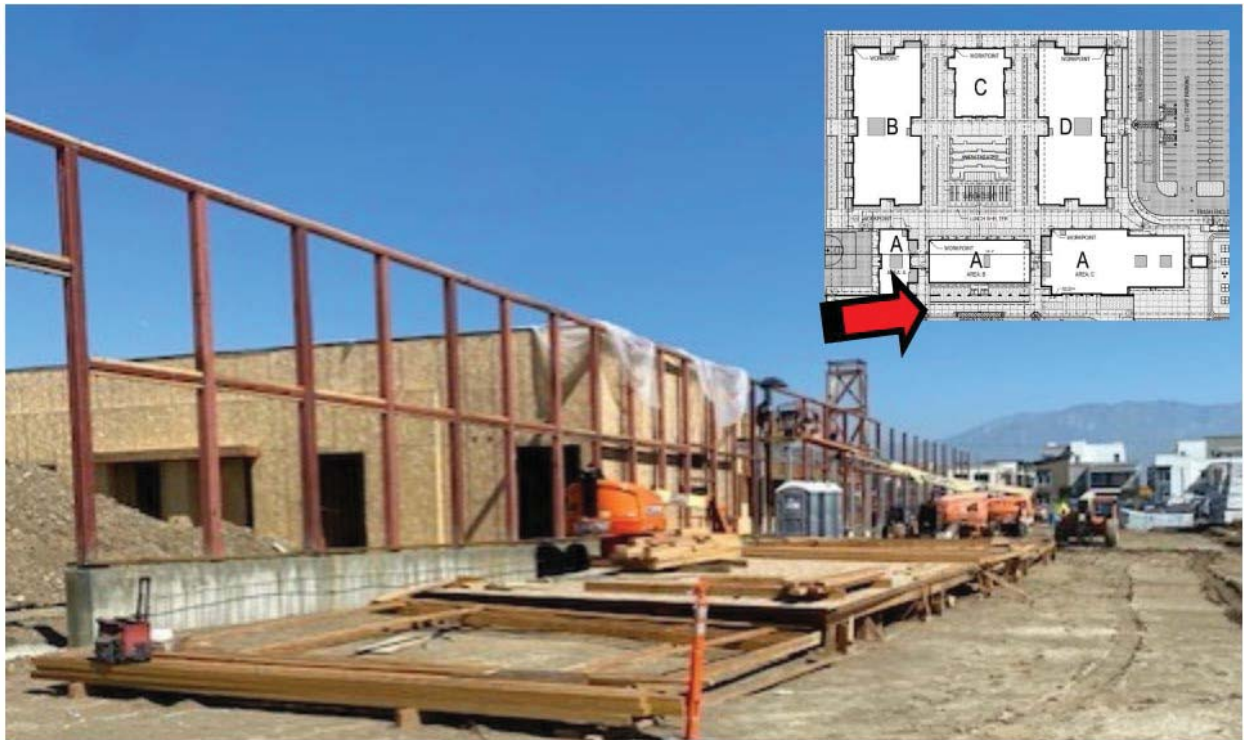
- **Legacy Academy (Preserve School #2)**

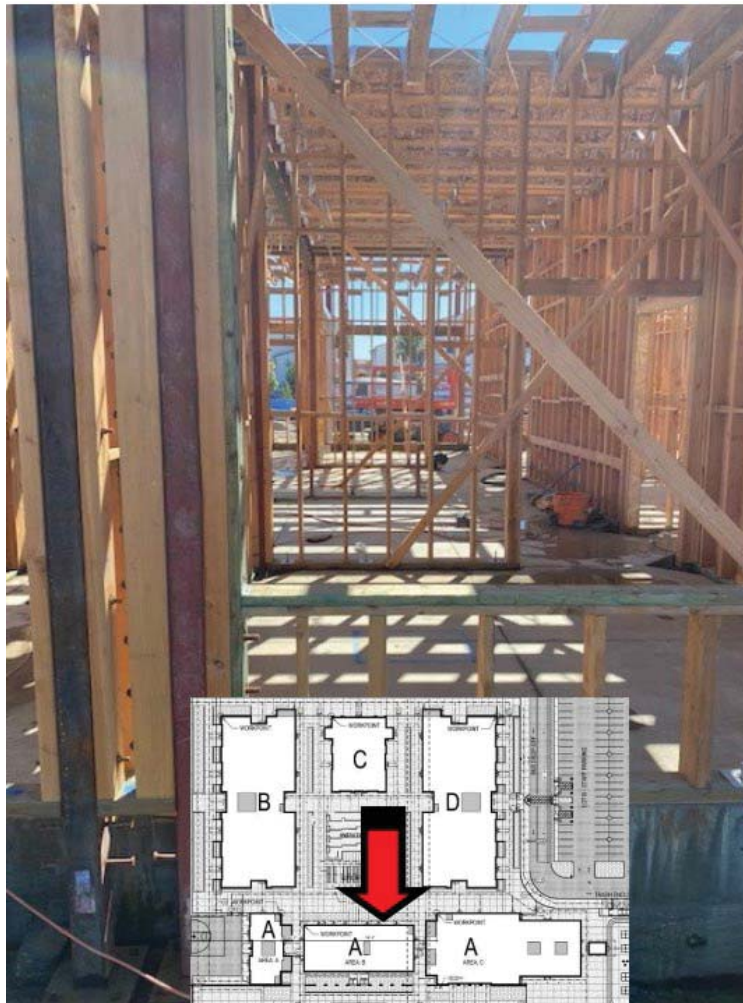
Building D is ongoing, stem walls, footings, framing, MEP rough-in are complete, and drywall is going up. Building AA MEP rough-in is ongoing, Building AB framing is ongoing. Building AC stem walls and concrete slab are complete, and framing is in progress. Building B stem wall forming is complete, and the concrete slab was poured this week. Building C trenching and rebar are set and framing of the stem walls has begun.















- **Front Office Relocations Group A**
  - **Borba ES, Marshall ES, and Walnut ES**

These three schools are receiving new administrative offices as part of the Measure G safety and security projects to create a single point of entry into the campuses. At Anna Borba, demolition of the old building is complete, and trenching for underground utilities is complete. Concrete stem wall forming is to follow and the concrete slab will take place on or about September 8.

At Marshall and Walnut, demolition of the old buildings is complete, and trenching for and installation of underground utilities is in progress, with concrete stem walls and slabs to follow.









- **Front Office Relocations Group B**
  - **Glenmeade ES, Litel ES, and Oak Ridge ES**

Like the Group A office relocations, the offices at these three schools are being relocated as part of the safety and security single point of entry program. Glenmeade will receive a brand-new building and Litel and Oak Ridge will be moved into existing, but renovated buildings. Construction is underway at all three sites. Once completed, the former administration building at Glenmeade will be modernized into a library. Litel and Oak Ridge ES's will receive similar swaps as two front-end classrooms will be converted into administration offices, and the previous administration offices will become each site's permanent library. Minor upgrades will also be made to the MPRs at these two sites, as well as ADA upgrades at all three sites.

