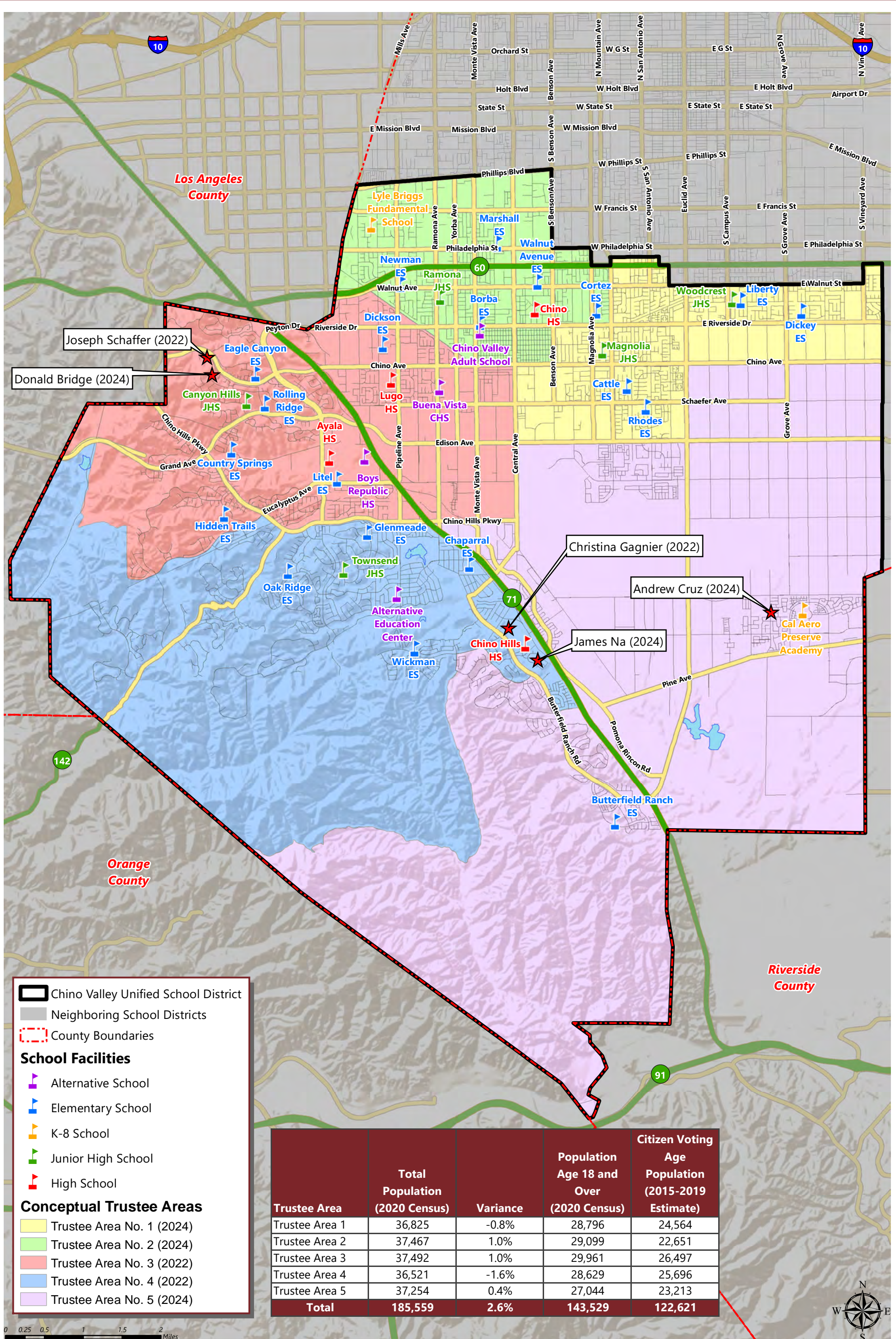


# CHINO VALLEY UNIFIED SCHOOL DISTRICT

## CONCEPTUAL TRUSTEE AREAS - SCENARIO 3



**Chino Valley Unified School District**

- Chino Valley Unified School District
- Neighboring School Districts
- County Boundaries

**School Facilities**

- Alternative School
- Elementary School
- K-8 School
- Junior High School
- High School

**Conceptual Trustee Areas**

- Trustee Area No. 1 (2024)
- Trustee Area No. 2 (2024)
- Trustee Area No. 3 (2022)
- Trustee Area No. 4 (2022)
- Trustee Area No. 5 (2024)

Trustee Area	Total Population (2020 Census)	Variance	Population Age 18 and Over (2020 Census)	Citizen Voting Age Population (2015-2019 Estimate)
Trustee Area 1	36,825	-0.8%	28,796	24,564
Trustee Area 2	37,467	1.0%	29,099	22,651
Trustee Area 3	37,492	1.0%	29,961	26,497
Trustee Area 4	36,521	-1.6%	28,629	25,696
Trustee Area 5	37,254	0.4%	27,044	23,213
<b>Total</b>	<b>185,559</b>	<b>2.6%</b>	<b>143,529</b>	<b>122,621</b>

0 0.25 0.5 1 1.5 2 Miles  
December 2021



# CHINO VALLEY UNIFIED SCHOOL DISTRICT

## CONCEPTUAL TRUSTEE AREAS - SCENARIO 3

<b>Total Population:</b>	<b>185,559</b>	<b>Ideal Population:</b>	<b>37,112</b>	<b>Variance:</b>	<b>2.6%</b>
--------------------------	----------------	--------------------------	---------------	------------------	-------------

<b>Total Population (2020 Census)</b>					
	<b>Trustee Area 1</b>	<b>Trustee Area 2</b>	<b>Trustee Area 3</b>	<b>Trustee Area 4</b>	<b>Trustee Area 5</b>
Population	36,825	37,467	37,492	36,521	37,254
Population Variance	-287	355	380	-591	142
	-0.8%	1.0%	1.0%	-1.6%	0.4%
Hispanic/Latino	56.6%	65.6%	30.0%	32.5%	30.5%
White	21.0%	18.9%	21.4%	27.2%	18.8%
Black/ African American	4.2%	2.9%	3.5%	4.2%	6.7%
American Indian/ Alaska Native	0.2%	0.2%	0.1%	0.2%	0.2%
Asian	15.0%	9.8%	41.5%	31.8%	39.0%
Native Hawaiian/ Other Pacific Islander	0.1%	0.1%	0.2%	0.1%	0.2%
Other	0.5%	0.5%	0.4%	0.5%	0.6%
Two or More Races	2.5%	2.0%	2.8%	3.6%	3.9%

<b>Population 18 and Over (2020 Census)</b>					
	<b>Trustee Area 1</b>	<b>Trustee Area 2</b>	<b>Trustee Area 3</b>	<b>Trustee Area 4</b>	<b>Trustee Area 5</b>
Population	28,796	29,099	29,961	28,629	27,044
Hispanic/Latino	53.6%	62.1%	28.6%	30.5%	27.9%
White	22.9%	21.2%	23.5%	29.8%	20.6%
Black/ African American	4.5%	3.1%	3.8%	4.4%	6.8%
American Indian/ Alaska Native	0.2%	0.2%	0.2%	0.2%	0.1%
Asian	15.9%	10.8%	41.2%	31.6%	40.7%
Native Hawaiian/ Other Pacific Islander	0.1%	0.1%	0.1%	0.1%	0.2%
Other	0.5%	0.5%	0.4%	0.5%	0.5%
Two or More Races	2.3%	1.9%	2.2%	2.8%	3.2%

<b>Citizens by Voting Age Population Estimate (2015-2019)</b>					
	<b>Trustee Area 1</b>	<b>Trustee Area 2</b>	<b>Trustee Area 3</b>	<b>Trustee Area 4</b>	<b>Trustee Area 5</b>
Population	24,564	22,651	26,497	25,696	23,213
Hispanic/Latino	55.4%	58.1%	30.6%	31.0%	29.5%
White	27.5%	29.8%	31.0%	41.0%	28.8%
Black/ African American	4.9%	3.4%	4.6%	3.1%	6.8%
American Indian/ Alaska Native	0.2%	0.0%	0.3%	0.3%	0.1%
Asian	10.6%	6.9%	31.5%	22.2%	28.2%
Native Hawaiian/ Other Pacific Islander	0.0%	0.1%	0.0%	0.2%	0.2%
Other	0.0%	0.0%	0.0%	0.0%	0.0%
Two or More Races	1.4%	1.7%	2.0%	2.3%	6.4%