



# **BACK TO SCHOOL**

Ms. Lindsay's Class 23/24

# DAILY SCHEDULE

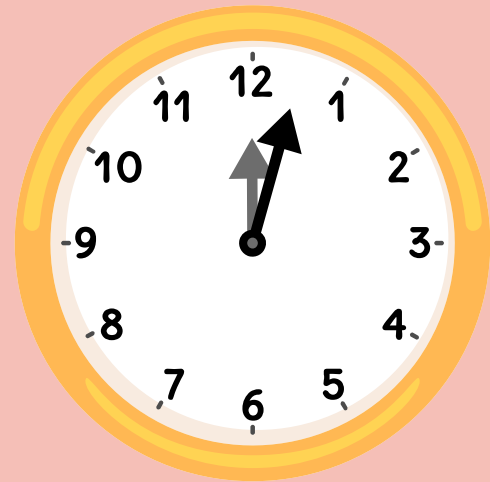
- 7:50 ELA (Assembly Monday Mornings)
- 8:45 DELD/Intervention
- 9:30 Recess
- 9:43 Math
- 11:05 Lunch
- 11:45 ELA
- 12:25 Afternoon Recess
- 12:38 ELA
- 1:15 Sci/SS
- 1:45 ELA Centers
- 2:10 Second Step
- 2:30 Dismissal (Tuesday Dismissal at 11:20)



**\*PE Wednesdays/Fridays, Library Mondays,  
Music Thursdays**

# DAILY SCHEDULE (TUESDAY)

- 7:50 Attendance
- 7:55 DELD/ELA
- 9:20 Math
- 10:00 Lunch
- 10:30 ELA
- 11:20 Dismissal





# **HOMEWORK**



**Read 20 minutes on Monday through Thursday evenings (can be read to, read with, or read alone)**

**Students must earn 1 AR point each week**

**Math – Spiraling Skill Work**

**Unfinished Classwork**

✦ **Review Spelling Words throughout the week**





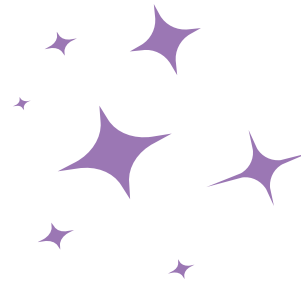
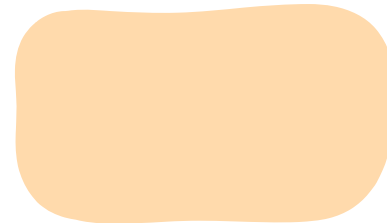
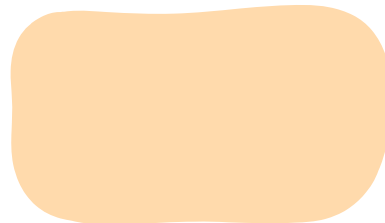
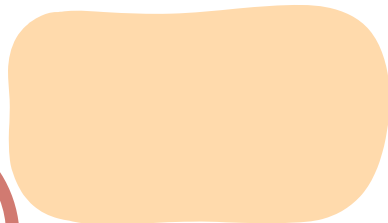
# **BLUE HOMEWORK FOLDER**



**HW Log with assignments and announcements.  
Please sign each night. Students can write the titles of the  
books they read.  
Spelling lists including HFW are provided on the newsletter.**

**Math Homework inside the folder.**

**Flyers from Liberty inside the folder.**



# TESTS/GRADED ASSIGNMENTS

- For ELA: Depending on the week and the skills assigned, we will stay on a story group/skill set anywhere from 5-10 days.
- Tests include: reading comprehension for literature and nonfiction, listening comprehension, and grammar.
- Spelling: Spelling words are assigned weekly and support mastery of phonics and decoding. Spelling assessments are on Fridays.
- Writing: Grades are focused on content, structure, and mechanics - spelling, punctuation and capitalization. We work on writing prompts over several days to two weeks.



# TESTS/GRADED ASSIGNMENTS

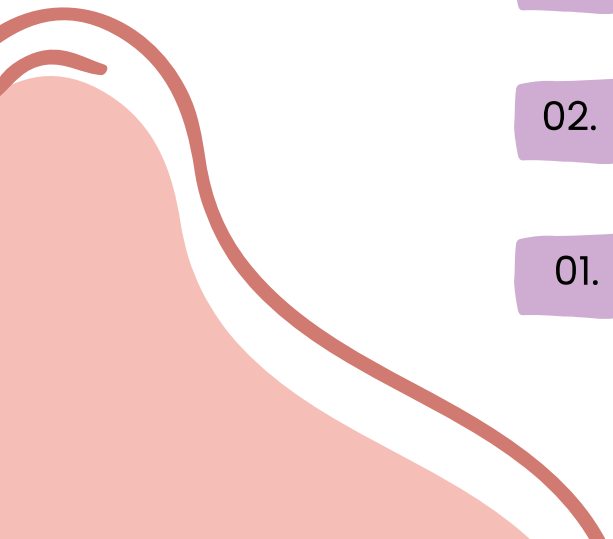

- For Math: We will test after ample time for modeling, practice, and concept attainment, approximately 5-10 days. We will test mid-week because of a crowded Friday.
- Content: Major strands include addition, subtraction and problem-solving using addition/subtraction. Later, measurement includes: time and money.
- Social Studies/Science - hands-on activities and projects.





# GRADING



- 
- 04. Exceeding Standard - exceeds grade level expectations. Shows deep understanding.
  - 03. Meeting Standard - meets grade level expectations. Shows consistent understanding.
  - 02. Approaching Standard - making progress toward grade level expectations. Shows inconsistent understanding.
  - 01. Below Standard - does not meet grade level expectations. Has considerable difficulty.
- 



# STANDARDS-BASED LEARNING PROGRESSION

1

## DEVELOPING PROFICIENCY

Student demonstrates progress toward initial foundational skills of the topic.



2

## APPROACHING GRADE LEVEL STANDARDS

Student demonstrates proficiency on foundational skills of the topic.



3

(TARGET)

## MEETS GRADE LEVEL STANDARDS

Student demonstrates proficiency on all grade level skills of the topic.



4

## EXCEEDS GRADE LEVEL STANDARDS

Student demonstrates understanding and performance beyond proficiency and has exceeded the standard.



# **ClassLink**

**Go through the Liberty  
Elementary Website**

**You can also add ClassLink on your phone.**

- 1. Download the app.**
- 2. Search for Chino Valley Unified School District**
- 3. Enter your child's username and password.**

# **Online Testing**

**All tests will be taken online on McGraw Hill/Wonders**

**Online testing provides immediate feedback to your child.**

**It provides immediate feedback to you, as grades are available to you the day a test is taken.**

# **ACCELERATED READER (AR) EXPECTATIONS**

## **ALL STUDENTS ARE**

### **REQUIRED TO...**

**READ FOR 20 MINUTES  
EACH NIGHT OR MORE!**

**READ AR BOOKS EACH  
week**



**TAKE AR TESTS AT  
SCHOOL EACH WEEK**

**EARN 12 AR POINTS PER  
TRIMESTER**

20 Points = Silver 30 Points = Bronze 40 Points = Gold

# 2ND GRADE MATH AWARDS

- IXL
- I Excel at Math! Super Mathematician
- Students are encouraged to complete 10 math skills per trimester at 80% or higher (30 math skills a year)
- **Super Mathematician Awards**
  - **Blue Shield:** 30 IXL math skills
  - **White Shield:** 20 IXL math skills
  - **Red Shield:** 10 IXL math skills



# TECHNOLOGY

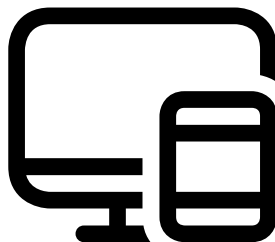
- Students will have a laptop assigned to them this year. It will be the same one all year.
- Technology standards including using specific features or programs such as Word and PowerPoint.
- Please remind your son or daughter to take care of their devices. Use them responsibly.
- Parents will be charged for damages of \$50 per incident or a prepaid \$40 insurance fee. (No money returned). The fee is good for the current school year.



# HOW TO CONTACT ME...

## EMAIL

Amy\_Lindsay@chino.k12.ca.us



## PHONE

909-947-9749

## PARENTSQUARE

# **CLASSROOM AND SCHOOL EXPECTATIONS**

**Students are expected to  
be...**

- **Respectful**
- **Responsible**
- **Safe**







# **CLASSROOM AND SCHOOL EXPECTATIONS**

**Students can earn...**  
**Patriot Bucks (general store  
open Fridays)**  
**Tickets for a chance to win  
from the prize box**  
**Participation in Fun Friday  
activities**





# **CLASSROOM AND SCHOOL EXPECTATIONS**

**Intervention Form  
Major/Minor Incidents  
Communication with Parent**



## **CLASSROOM AND SCHOOL EXPECTATIONS**

**Students are allowed to  
snack during recess.**

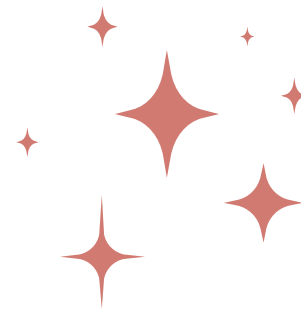
**Please provide a non-  
disposable water container.**

**Only water inside the  
classroom.**

**Please have students leave  
toys at home.**

# PARENT CONFERENCES!

- Parent Conference Sign-Up sheet on the side table (Sept 25-29)





# **LIBERTY PATRIOT SPIRIT WEAR**

- **Fridays are Spirit Days at Liberty**

Please have students wear any red, white, or blue shirt (or a combination)

Students may wear any Liberty shirt.

Students may wear any patriotic shirt.



- **Mondays...Wear black!**

For our Monday assemblies, the whole second grade team can wear black to show their spirit!



**Please join the PTO**

**Thank you for your generosity! It is  
greatly appreciated!**

