

## Library Expansion

### Canyon Hills Jr. High School

**Architect:** WLC Architects  
**Contract Start:** September 29, 2009  
**Contract Completion:** October 9, 2010

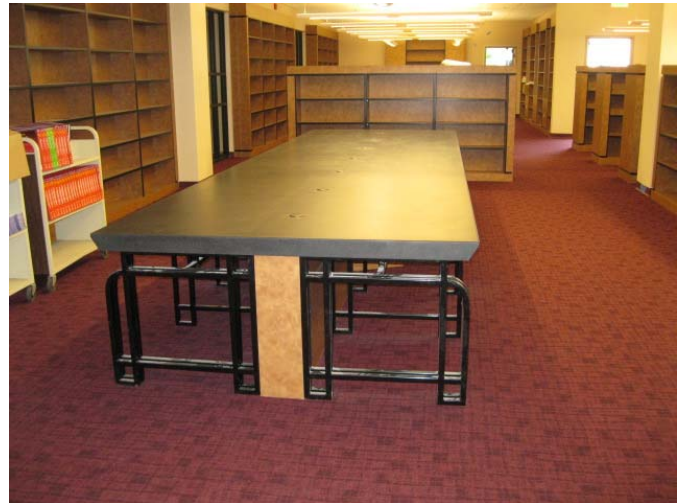
**Contractor:** JRH Construction  
**Contract Amount:** \$1,505,199  
**Change Orders in Process:** \$83,369  
**Change Order Percent:** 5.54%

**Scope:** Modernization and expansion of existing library, conversion and upgrading of (2) existing classrooms into science laboratories, and modernization of (2) restrooms. Utility upgrades and replacement include electrical power, lighting, data/phone, fire alarm, water, gas, fire sprinklers, and HVAC. Architectural improvements include new flooring, ceilings, roofing, stone, sheet metal, casework, science casework, wallboard systems, paint, doors, door frames, and door hardware.

**Status:** JRH Construction continues to work on the following activities: The library and the science labs have been punched. The punchlist items are being corrected, with the science labs now turned over for the school to use. Punchlist items should be corrected by the end of next week.



1. Library complete.



2. Library complete.



3. Science labs complete.



4. Science labs complete.

## Library Expansion

### Townsend Jr. High School

**Architect:** WLC Architects  
**Contract Start:** September 29, 2009  
**Contract Completion:** October 9, 2010

**Contractor:** JRH Construction  
**Contract Amount:** \$821,700  
**Change Orders in Process:** \$55,302  
**Change Order Percent:** 6.73%

**Scope:** Modernization and expansion of existing library. Utility upgrades and replacement include electrical power, lighting, data/phone, fire alarm, water, gas, fire sprinklers, and HVAC. Architectural improvements include new flooring ceilings, roofing, stone, sheet metal, casework, wallboard systems, paint, doors, door frames, and door hardware.

**Status:** JRH Construction has continued to work on the following activities: Punchlist has been issued and corrections are nearly all complete.



1. Exterior complete.



2. Existing area complete.



3. Expansion area complete.



4. Connection from existing to new complete.



## Swimming Pool Renovation

### Ayala High School

**Architect:** Aquatic Design Group

**Contract Start:** 7/19/10

**Contract Completion:** Anticipated 10/8/10

**Contractor:**

Nadar Inc.

**Contract Amount:**

\$470,600

**Change Order Negotiation:**

\$47,842

**Change Order Percent:**

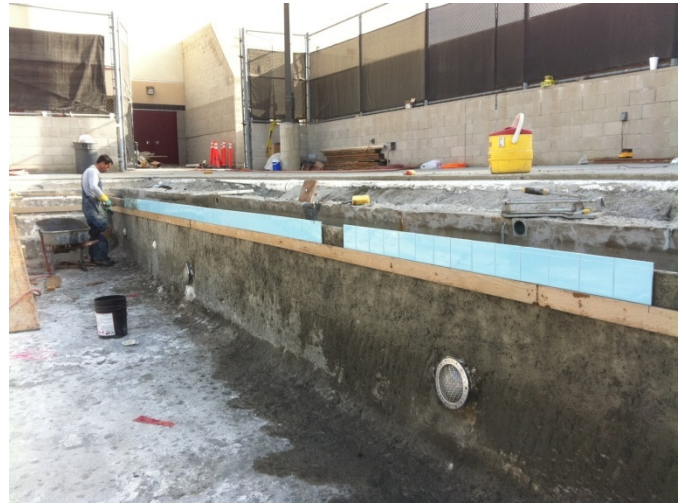
10.16%

**Scope:** Renovation of pool area.

**Status:** Day 57 – Continuing with wall target, waterline, & gutter cap tile installations. Within the next two weeks the cantilever deck will be poured and tile racing lines will start.



1. Shotcrete at new gutter lip.



2. Waterline tile installations.



3. Wall target installations.



4. Gutter lip cap tile installations.

## Building "L" & Fencing

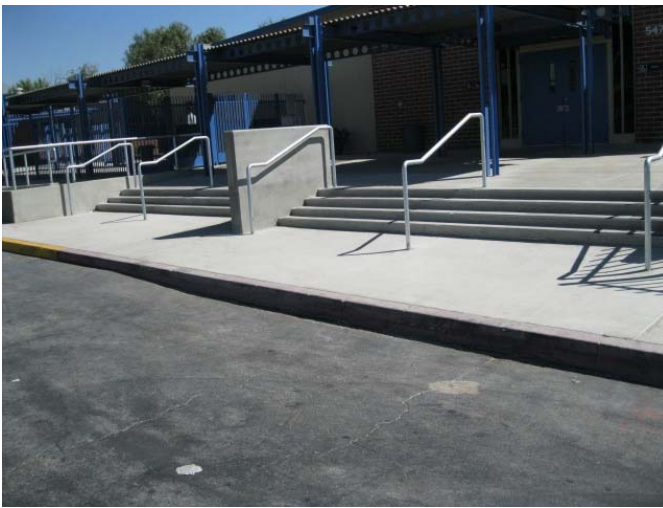
### Chino High School

**Architect:** Harley Ellis Devereaux  
**Contract Start:** June 21, 2010  
**Contract Completion:** August 4, 2010

**Contractor:** Dalke & Sons Construction  
**Contract Amount:** \$304,480  
**Change Orders Submitted:** \$26,887  
**Change Order Percent:** 8.83%

**Scope:** Work includes new tube steel fencing and gates with panic hardware that will secure the front of the campus. Alterations to the front entrance of building L to include a new ADA compliant ramp, and modifications to the interior of building L that include alterations to the lobby and adjacent area to provide a new interior circulation route. Alterations include a new storefront at the library and new accessible casework at the receptionist's desk.

**Status:** Dalke and Sons has completed all contractual work, including the punchlist items, with the exception of the spandrel glass at the storefront. Closeout is being worked on and will be submitted for review and acceptance by next week.



1. Front entrance steps complete.



2. Handicap ramp and fencing.



3. New storefront at library.



4. Interior modernization complete.



## Accessible Ramp

### Country Springs ES

**Architect:** Harley Ellis Devereaux

**Contract Start:** 6/16/10

**Contract Completion:** 7/30/10

**Contractor:** Above All Names Construction

**Contract Amount:** \$118,440

**Change Orders in Process:** \$10,665

**Change Order Percent:** 9.00%

**Scope:** Work includes demolition of existing ramp and reconstruction of new ramp. Work also includes construction of retaining wall and DSA required site work and improvements.

**Status:** Project complete. Punchlist complete. Change Order #1 (Final) pending for October Board Meeting.



1. Completed Ramp from North.



2. Completed Ramp from Top.



3. Completed Ramp from street.



4. Ramp Entry.



## **Alterations & Improvements**

### **Rolling Ridge ES, Country Springs ES, & Butterfield Ranch ES**

**Architect:** Harley Ellis Devereaux

**Contract Start:** 6/21/10

**Contract Completion:** 8/19/10

**Contractor:**

Delt Builders

**Contract Amount:**

\$397,800

**Change Orders in Process:**

\$33,428

**Change Order Percent:**

8.40%

**Scope:** At Butterfield Ranch ES, work includes construction of (1) shade shelter, (2) ADA curb ramps, (1) ADA access path, outdoor basketball courts, and classroom electrical upgrades. At Country Springs ES, work includes construction of (1) shade structure, (1) ADA access ramp, and alterations to modify the existing library/reading room. At Rolling Ridge ES, work includes construction of (1) passenger unloading zone and (1) ADA accessible ramp.

**Status:** Butterfield Ranch: Electrical Work is complete. Paving is complete with the exception of slurry and striping. Shelter installed. Country Springs: Library work complete. Shelter installed. Paving is complete with the exception of slurry and striping. Rolling Ridge: Paving is complete with the exception of striping.



1. Country Springs – Shelter installation complete.



2. Country Springs – Library finishes and data/power work complete.



3. Butterfield Ranch – Shelter installation and paving complete.



4. Rolling Ridge – Drop-off ramp complete.