

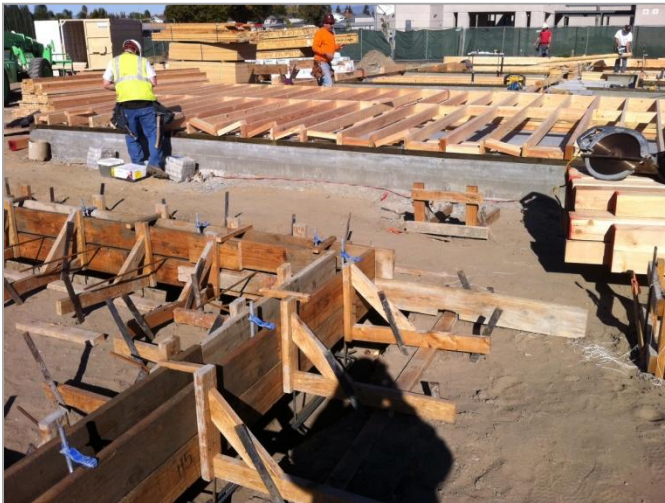
Construction of One Classroom Wing

Cattle Elementary School

Architect:	WLC Architects, Inc.	Contractor:	Pacwest Corporation
Construction Manager:	Bernards	Contract Amount:	\$2,974,000
Contract Start:	August 8, 2011	Change Orders in Process:	\$0
Contract Completion:	August 6, 2012	Change Order Percent:	0%

Scope: Construction of one new classroom wing consisting of seven (7) classrooms, staff and student restrooms, offices, work rooms with a lunch shelter addition and playground extension/reconfiguration and two (2) fire hydrant installations. New site work and courtyard with landscaping.

Status: Pacwest Corporation has poured all building footings. Slabs on grade have been poured at the east and west building, with the south building scheduled to pour early next week. The underground utilities outside the footprint of the building are ongoing. The framing at the east building is scheduled to be complete by the end of this week. The framing is in progress at the west building and will begin at the south building next week. MEP rough-in is scheduled to begin the beginning of next week.



1. Framing Progress at East Building 12/5/11.



2. Framing Progress at East Building 12/9/11.



3. Final West Building slab on grade pour.



4. Final South Building footing pour.

Restroom Upgrades

Marshall, Newman, and Anna Borba Elementary Schools and Ramona Junior High School

Architect:	WLC Architects, Inc.	Contractor:	De La Riva Construction
Construction Manager:	Chino Valley USD	Contract Amount:	\$677,497
Contract Start:	July 25, 2011	Change Orders in Process:	\$0
Contract Completion:	December 23, 2011	Change Order Percent:	0%

Scope: Restroom upgrades, which include ADA compliance.

Status: De La Riva Construction has completed the restroom upgrades at Marshall, Newman, and Anna Borba Elementary Schools and Ramona Junior High School.



1. Completed truncated dome installation for new ADA requirements.



2. Installation of new sinks, mirrors, waterless urinals, and partitions.

Lunch Shelter Replacement

Ayala High School

Architect:	KPI Architects, Inc.	Contractor:	WCCR Construction
Construction Manager:	Chino Valley USD	Contract Amount:	\$657,960
Contract Start:	July 25, 2011	Change Orders in Process:	\$24,129
Contract Completion:	December 15, 2011	Change Order Percent:	3.67%

Scope: Installation of a new multi-use shade structure.

Status: WCCR Construction has completed welding, grade beam installation, and concrete placement. Landscaping is on going, with the standing seam metal roof to be completed December 2011.



1. Placement of landscaping shrubs and mulch.



2. Completed grade beam installation and concrete placement.

Modernization/HVAC Replacement Project

Briggs Fundamental School

Architect: KPI Architects, Inc.
Construction Manager: Bernards
Contract Start: July 18, 2011
Contract Completion: September 26, 2012

Contractor: Harik Construction, Inc.
Contract Amount: \$3,758,000
Change Orders in Process: \$66,310
Change Order Percent: 1.76%

Scope: Site work modifications and modernization to 19 buildings, including new finishes (paint, ceiling tile, vinyl tackboard, flooring) casework, low voltage data systems, HVAC units, accessibility upgrades, and concrete site work. Improvements will also be made to the restrooms, lighting, signage, and new automatic fire alarm system.

Status: Phase Three of the Nine Phase schedule has had the punch list walk completed, and correction of punch list items are in process. Selective demolition for Phase Four has begun, and fence has been placed around the four classrooms in the phase. The ceiling tile grid system, ceiling tile, light fixtures, and insulation are being removed in preparation for placement of new light fixtures, acoustical ceiling tile, and R30 batt insulation. Mechanical, electrical, and plumbing rough in will begin mid December 2011. New vinyl pinboard has been prepared, and is awaiting rough in completion for installation. New ADA accessible casework has been field measured, and is in fabrication, in conjunction with the new countertops and back splashes. Material on site is being demolished and recycled with the requirements of the High Performance Incentive grant.



1. Placement of new ceiling tile, whiteboards, pinboard, base, and light fixtures.-Phase Three



2. Completed new ADA accessible casework, countertops, back splashes, vinyl composite tile, and sink.-Phase Three



3. Selective demolition of existing pinboard, blinds, and base. -Phase Four



4. Selective demolition of ceiling tile grid, ceiling tile, light fixtures, insulation, and casework.-Phase Four