

Construction of One Classroom Wing

Cattle Elementary School

Architect:	WLC Architects, Inc.	Contractor:	Pacwest Corporation
Construction Manager:	Bernards	Contract Amount:	\$2,974,000
Contract Start:	August 8, 2011	Change Orders in Process:	\$21,805
Contract Completion:	August 6, 2012	Change Order Percent:	0.74%

Scope: Construction of one new classroom wing consisting of seven (7) classrooms, staff and student restrooms, offices, work rooms with a lunch shelter addition and playground extension/reconfiguration and two (2) fire hydrant installations. New site work and courtyard with landscaping.

Status: Pacwest Corporation has completed the scratch, brown and color plaster coats. The single-ply roofs have been installed. All mechanical units have been installed. All drywall has been hung and taped. MEP rough-in is complete at all three buildings. Interior finishes will begin to be installed in the next week.



1. Interior Progress at South Building.



2. South Building and Canopy Footings in Progress.



3. Picture of the Courtyard in Progress.



4. West Side of the West Building in Progress.

Swimming Pool

Chino Hills High School

Architect:	WLC Architects, Inc.	Contractor:	Construct One
Construction Manager:	Bernards	Contract Amount:	\$5,291,462
Contract Start:	March 26, 2012	Change Orders in Process:	\$0
Contract Completion:	January 31, 2013	Change Order Percent:	0%

Scope: Construction of a 25yd X 35m Swimming Pool, Related Facilities, Boys and Girls Shower/Locker Building, Restrooms, Mechanical Room, Office, Storage, Snack Bar, Ticket Booths and Bleachers' Shade Structure.

Status: Grubbing and demolition complete. Overexcavation, backfill and compaction of building/bleacher shade structure pads complete and elevation certified. Main power and data ductbanks from Administration Building to Transformer Enclosure complete with wire/cabling pulled and connected. Stadium Fire Alarm and Data repulled and reactivated. Excavation of Pool 80% complete.



1. Grubbing and demolition complete.



2. Building pads overexcavated, backfilled and compacted.



3. Power and Data Ductbanks relocated, slurried and backfilled.
Wiring/cabling pulled and reconnected.



4. Excavation of Pool nearly complete.

Modernization/HVAC Replacement Project

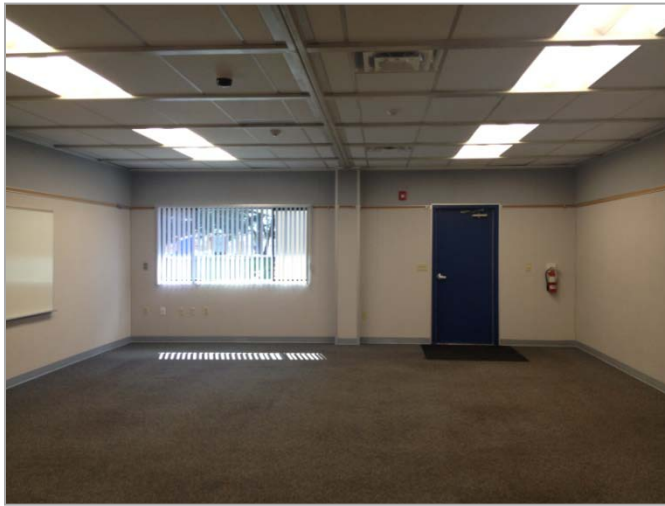
Briggs Fundamental School

Architect: KPI Architects, Inc.
Construction Manager: Bernards
Contract Start: July 18, 2011
Contract Completion: September 26, 2012

Contractor: Harik Construction, Inc.
Contract Amount: \$3,758,000
Change Orders in Process: \$98,652
Change Order Percent: 2.63%

Scope: Site work modifications and modernization to 19 buildings, including new finishes (paint, ceiling tile, vinyl tackboard, flooring) casework, low voltage data systems, HVAC units, accessibility upgrades, and concrete site work. Improvements will also be made to the restrooms, lighting, signage, and new automatic fire alarm system.

Status: Phase Seven of the Nine Phase schedule has had the punch list walk completed, and correction of punch list items are in process. Phase Eight began April 23, 2012, with fence placed around the four classrooms in the phase. Selective demolition of the existing ceiling tile, ceiling tile grid, insulation, and light fixtures has begun, in preparation for placement of new light fixtures, acoustical ceiling tile and grid, pinboard, and R30 batt insulation. The removal of the existing HVAC system and ductwork is in progress, for the placement of the new heat pump units and duct. The Home Economics room and Library Restrooms will also begin selective demolition late April 2012. Material on site is being demolished and recycled with the requirements of the High Performance Incentive grant.



1. Completed pinboard, base, vertical blinds, ceiling tile, and light fixture installation.-Phase Seven



2. Installation of the new interactive whiteboard, projector, light fixtures, and ceiling tile.-Phase Seven



3. Installation of floor protection and selective demolition of existing base, ceiling tile and grid, and casework.-Phase Eight



4. Selective demolition of existing ceiling tile, insulation, light fixtures, blinds, and countertops.-Phase Eight